

Figure 5B: c-Myc- 6 h

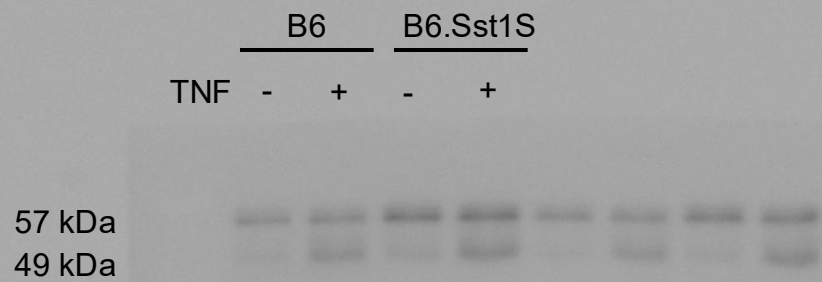


Figure 5B:  $\beta$ -tubulin- 6 h

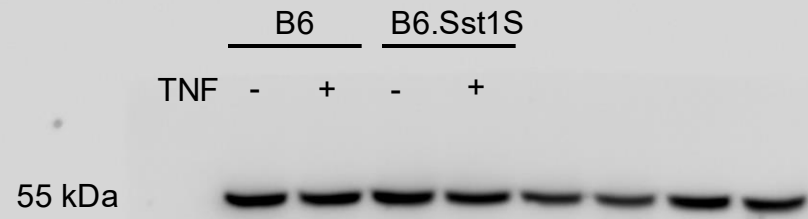


Figure 5B: c-Myc- 12 h

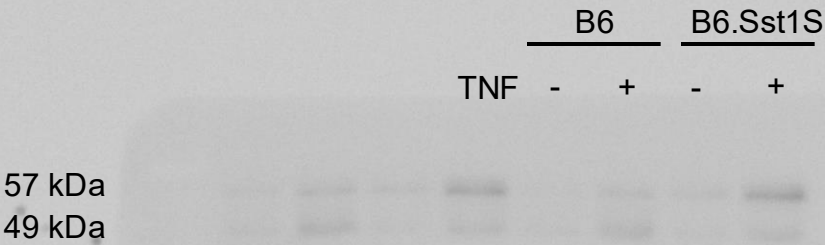


Figure 5B:  $\beta$ -tubulin- 12 h



Figure 5C: Fth

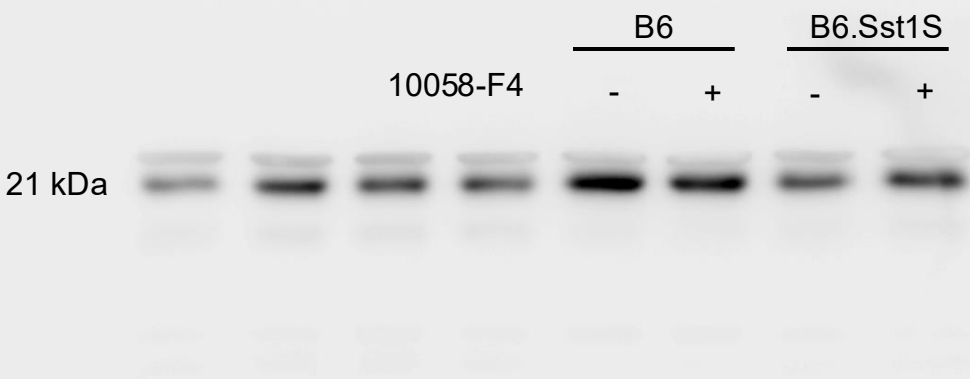
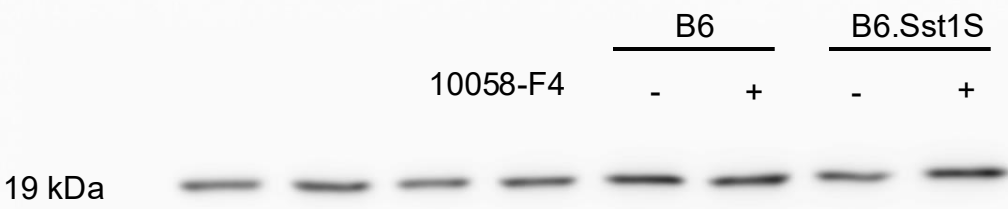


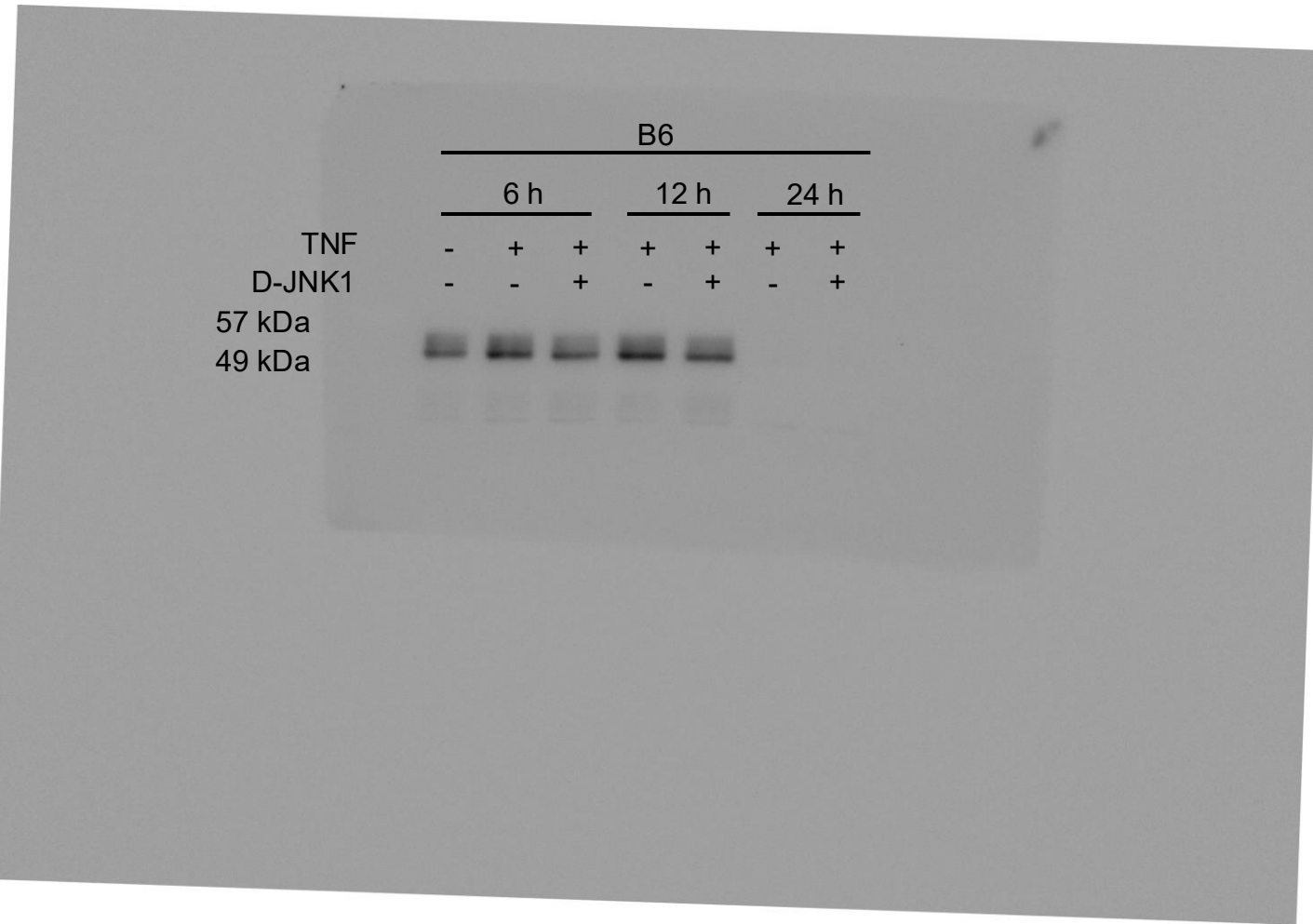
Figure 5C: Ftl



Western blot analysis showing MyoD expression (55 kDa) in B6 and B6.Sst1S mice. The blot is probed with anti-MyoD antibody. Lanes are labeled as follows:

	B6		B6.Sst1S	
10058-F4	-	+	-	+
55 kDa	[Western blot bands showing MyoD expression]			

The blot shows a single band at 55 kDa for all lanes. The intensity of the band is significantly higher in the B6.Sst1S + 10058-F4 lane compared to the other lanes.



### Figure 5l: c-Myc

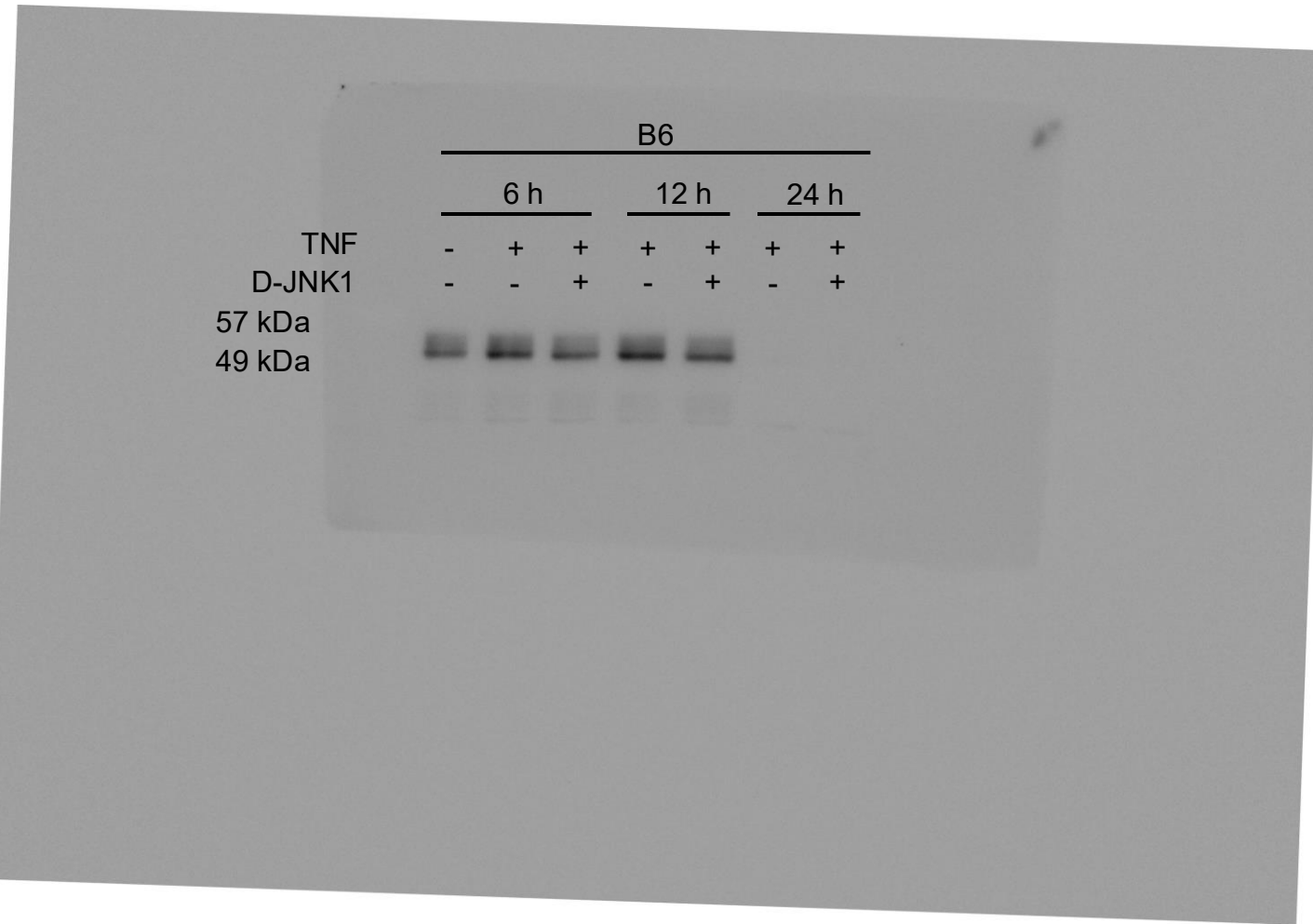


Figure 5l: p-cJun

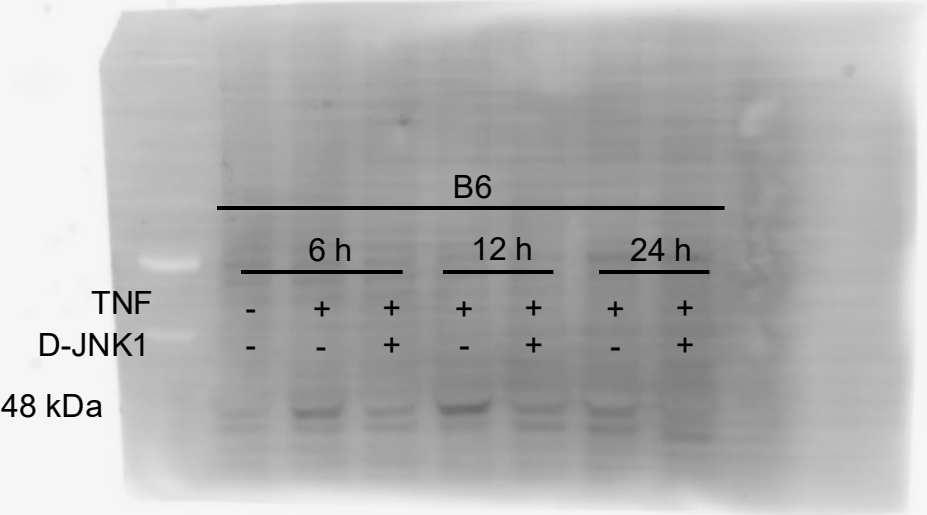


Figure 5l:  $\beta$ -tubulin

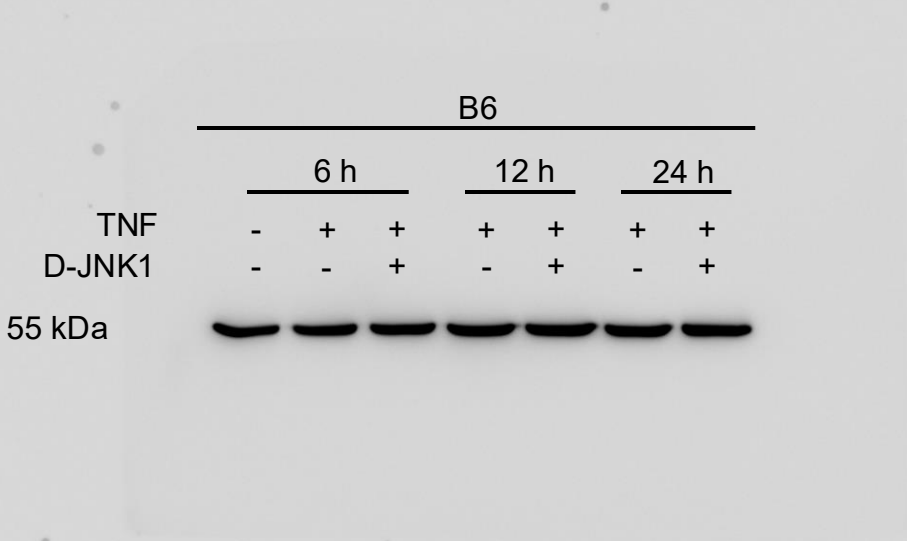


Figure 5J: c-Myc

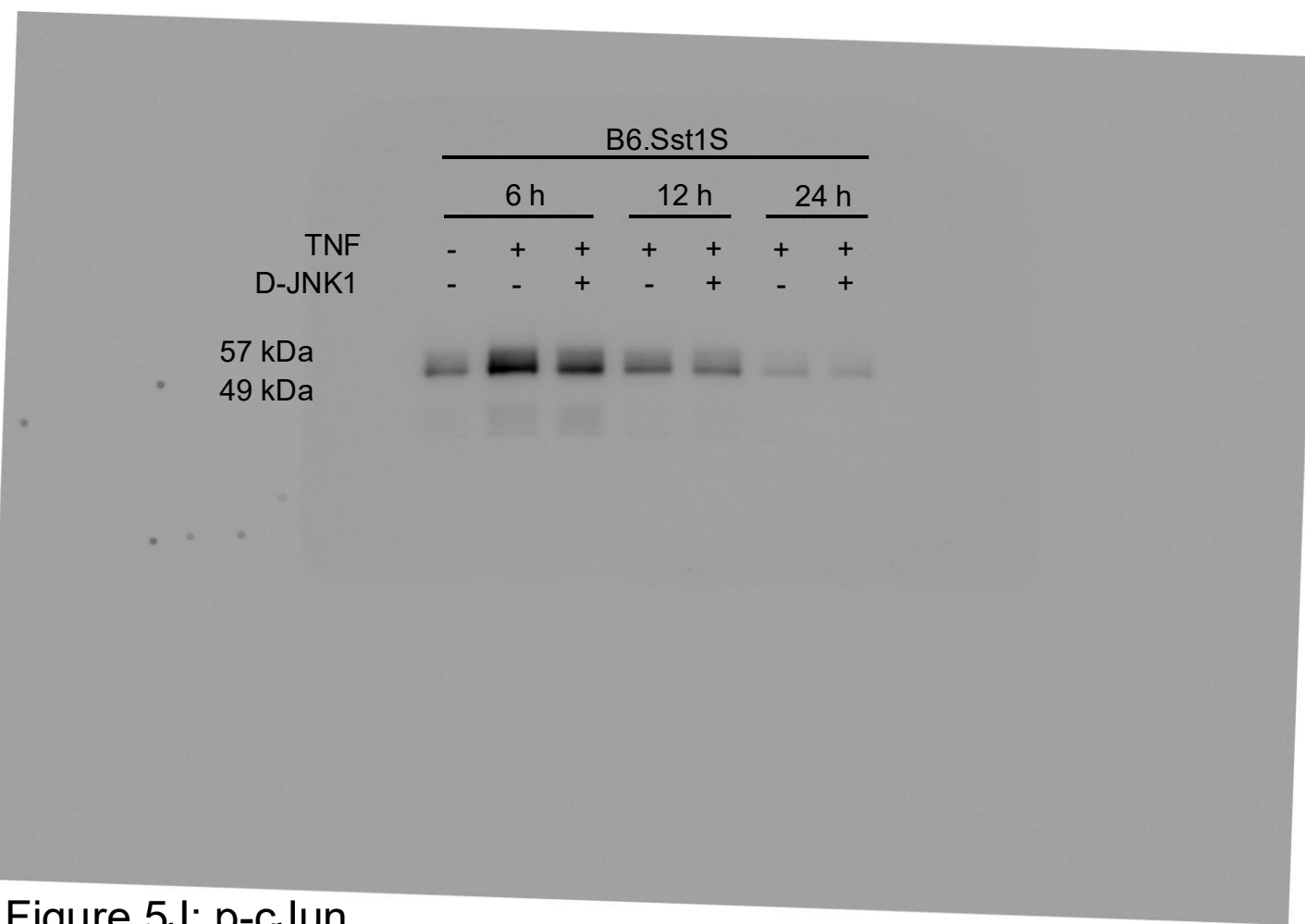


Figure 5J: p-cJun

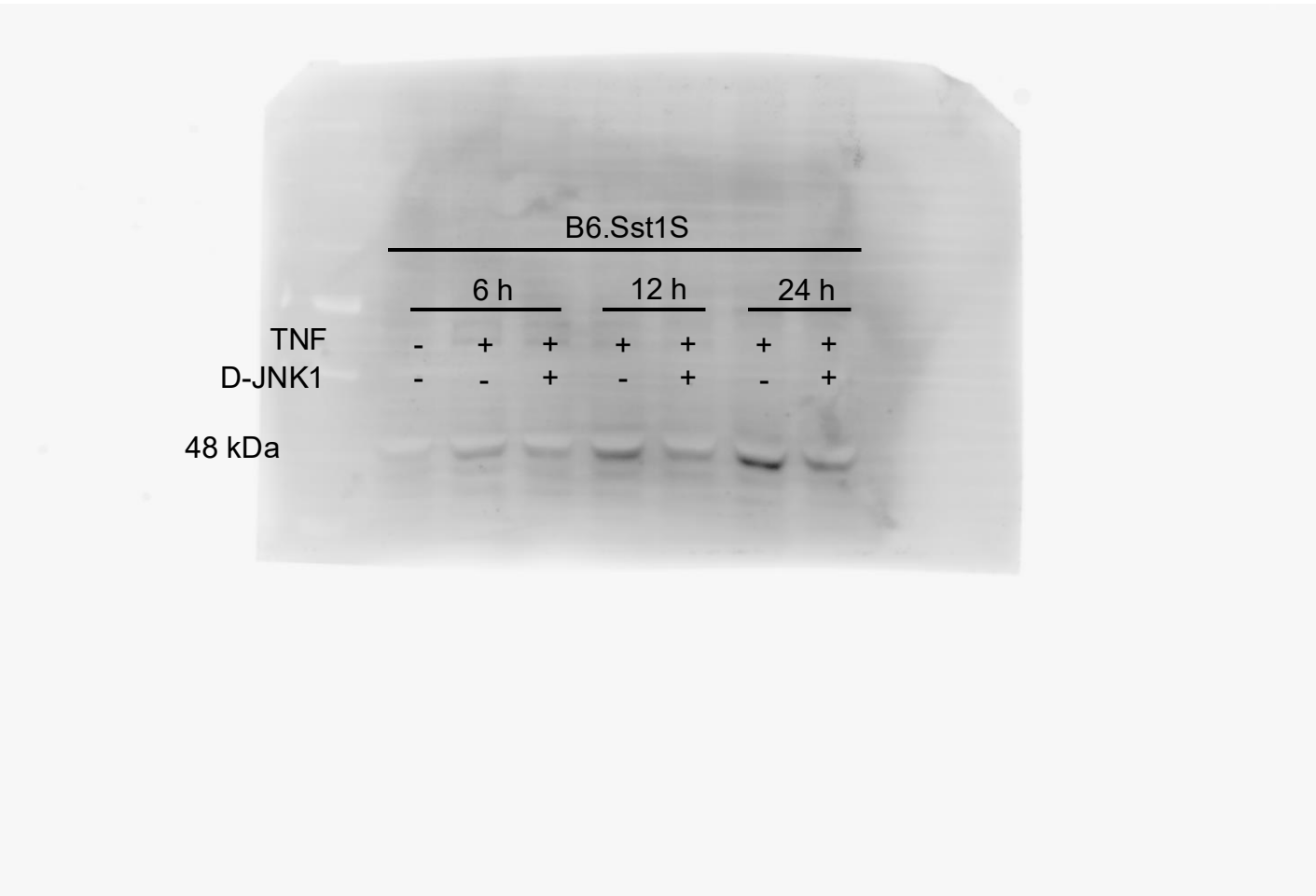


Figure 5J:  $\beta$ -tubulin

